



Kingwell Fibre

**Kingwell Fibre Materials Co.,Ltd**

### 1.1, Combo Bag & Filter Sock

**Kingwell** is the Innovation genius specialized in Fireless and Smokeless High Temp Fibre **Combo Bags** for molten metal Filtration and Distribution used for rolling slab castings and various alloy castings.





Which are specially designed and woven for the diffusion and filtration of aluminium. High twist yarns are used to control strand diameters and resist flattening or distortion under pressure from contact with molten aluminium.

### **Kingwell Black Flex Advantages**

- High temp resistance is up to 1,200 C.deg
- No Fire, No Black Ashes Pollution, No Offensive Toxic Gas, Smokeless, 0 contamination to the Slab Casting from A to Z
- Super corrosion resistance to molten aluminum,  
Not easy to stick to the mold,  
Beneficial for initial casting, and good casting effect,  
High safety
- Exquisite heat effect functions, the least heat loss, none overheating
- When molten metal introduced, the King Black Flex combo will self harden the mold path, and the molten aluminum on its surface is like oil, with good melt distribution effects



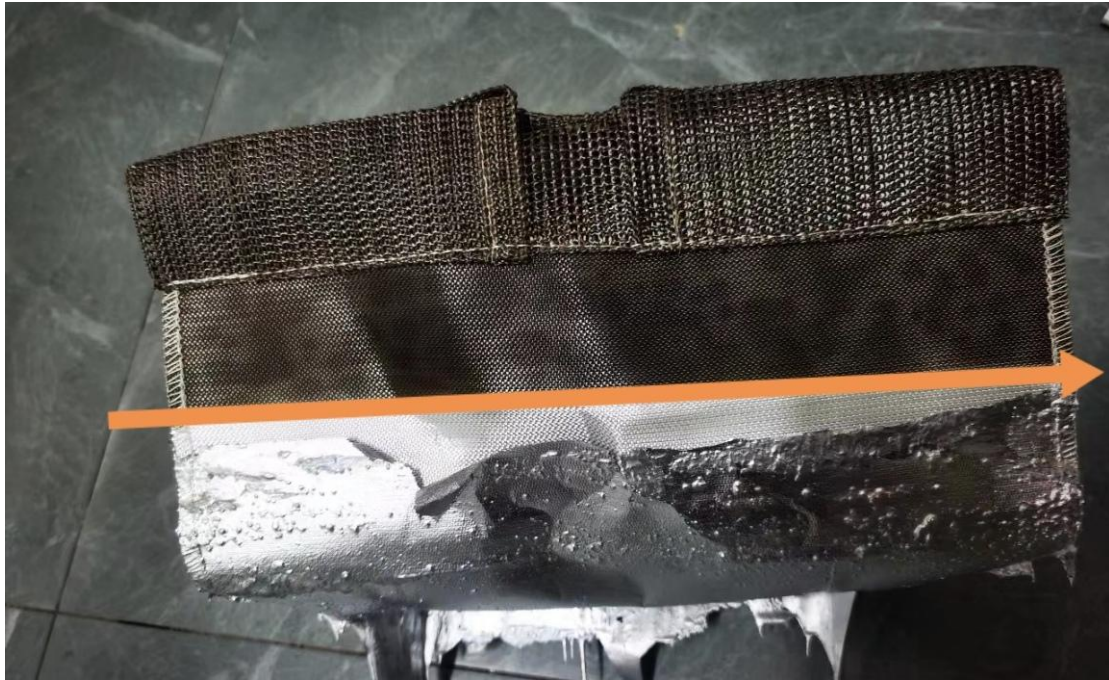
Kingwell Fibre

## Kingwell Fibre Materials Co.,Ltd

- Good breathability, beneficial for reducing melt Turbulence, improve metal distribution
- Removes oxides, Eliminates spike racks, Reduces scrap, and improve the metal ductility and mechanic characteristics

**Applications** for large particle filtration for wash reduction include **Trough socks, Channel bags, Launder windsocks, Spout socks and Combo bags.**





**We also could customize very stiff Pressed filter cups and various cut shapes meshes for the high-end users.**