



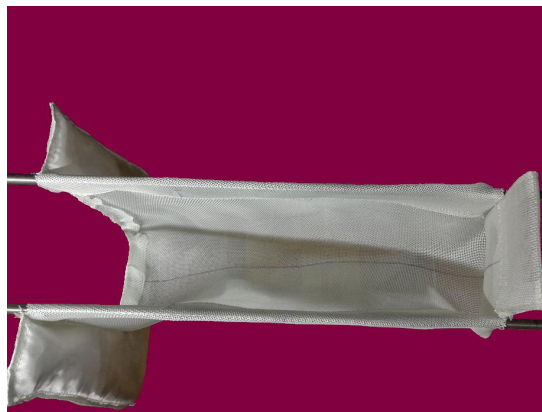
Kingwell Fibre Materials Co.,Ltd

1.1, Combo Bag & Filter Sock

---Highest Temperature Nano Ceramic Treated Fiberglass Mesh Filtrations

We serve the world's largest Aluminium Rolling / Slab Ingot Casting Smelter for years!

Which are specially designed and woven for the diffusion and filtration of aluminium. High twist yarns are used to control strand diameters and resist flattening or distortion under pressure from contact with molten aluminium.



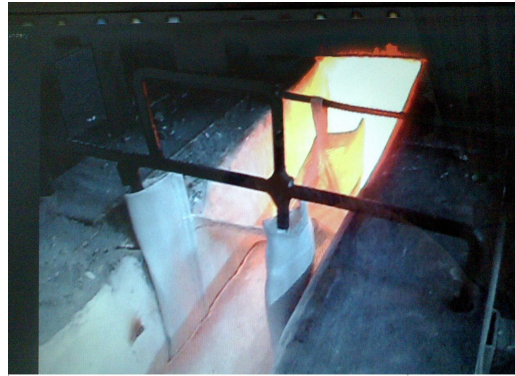
We meet highest technical requirements and are particularly distinguished by

Highest Thermal Resistance, Professional Sewing Skill, Less LOI, Best Filtration Effort

Applications for large particle filtration for wash reduction include **Trough socks, Channel bags, Launder windsocks, Spout socks and Combo bags.**



Kingwell Fibre Materials Co.,Ltd



Advantages:

- Ease of installation
- Reduces turbulence
- Improves metal distribution
- Reduces scrap
- Removes oxides
- Eliminates spike racks
- Produces minimal odor and smoke upon contact with molten aluminium

Availability:

- Woven fabrics, in a variety of weaves and coatings, available as custom made pre-sewn shapes, with or without gaskets or wires, or in roll form.
- Customized weaving can be done to meet customer needs, if required.

We are also strongly promoting various Peerless Smokeless Carbonized filtration mesh and Pre-sewn Filter bags !

Yes, it's the growing Trend in the future!